

Padding Specification



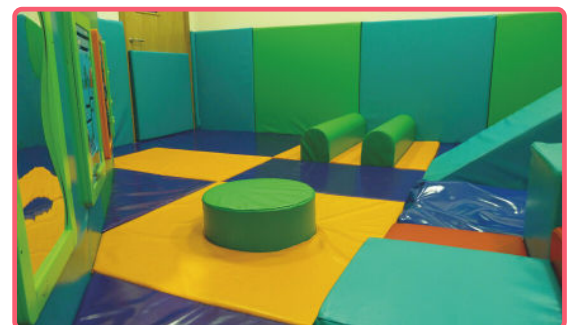
About

Floor and Wall Padding are perfect additions to **make any space safe**.

Whether it's a soft play room, sensory room, bedroom or corridor, **padding ensures a safe environment** for those who need it most.

For a long lasting and high-quality finish, our **handmade** padding is **timber backed, machine sewn** and comes complete with anti-slip materials. And to ensure a perfect fit, we will carry out a site survey during our pre-production phase to measure your space.

No space is too big or too small for padding. For total peace of mind, we can create padding panels to safely cover floors, radiators, pipework, doors and many other custom applications.



Applications



Schools



Hospitals



Private Homes



Care Homes

Features

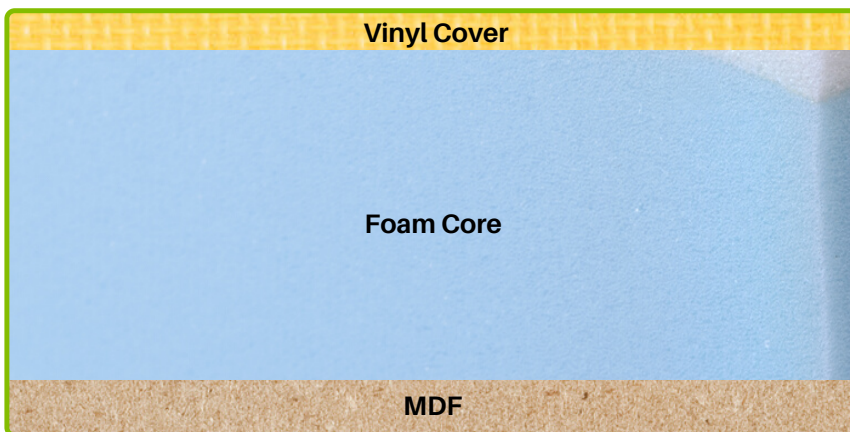
- | | |
|----------------------------------|---------------------------|
| ✓ Robust and Shock Absorbing | ✓ Easy Clean |
| ✓ Made to Measure | ✓ Machine Sewn Covers |
| ✓ Phthalate and Latex Free | ✓ Indoor use only |
| ✓ Flame Retardant Foam and Vinyl | ✓ MDF backed for Rigidity |

Wall Padding Specification



Padding Construction

Our safety padding is made with a cushioning foam core, robust MDF backboard and is covered in easy to clean, machine sewn vinyl.

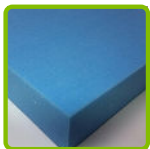


Material Specifications

Below you will find the standard specifications of the materials used in our padding. Additional properties and variations are available on request.

Foam

Polyurethane closed cell foam



75mm

- Blue colour
- Density: 33kg/m³
- Fire Test: Crib V(6)



38mm

- White colour
- Density: 50kg/m³
- Fire Test: Crib V(6)

Vinyl

- 600gsm
- Double sided PVC coated nylon
- UV inhibited
- Anti-fungal finish
- Flame resistant

MDF

- Thickness: 6mm

Optional Properties

- Moisture resistant
- Fire retardant

Wall Padding Specification



Sizes

Heights

1220mm

1800mm

2300mm

Custom sizes are available
Largest panel size: 2440 x 1220mm

Depths

Standard & Recommended sizes:

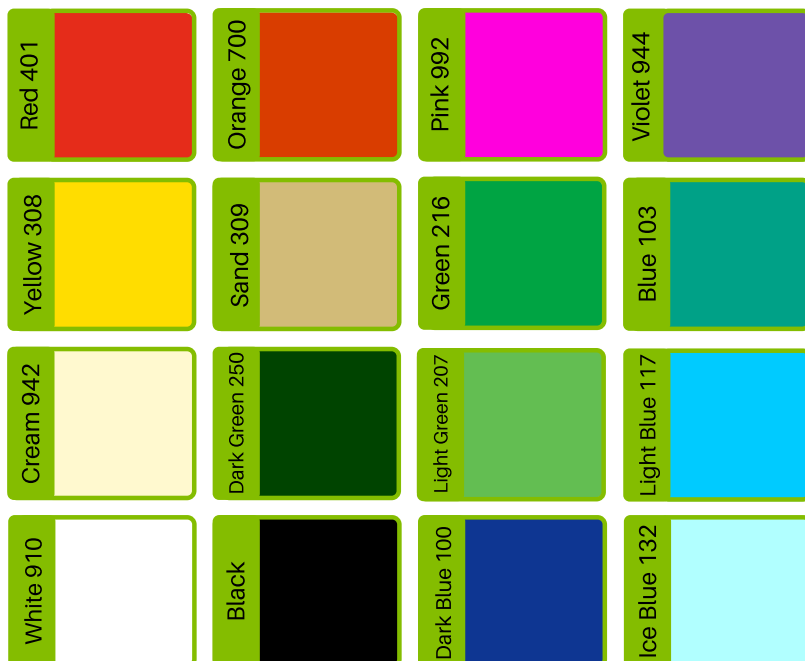
50mm

81mm

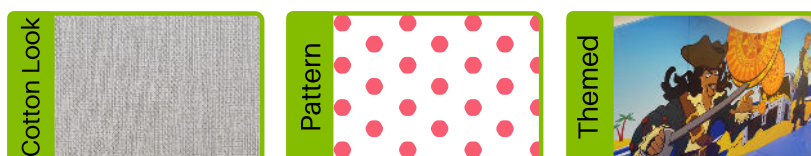
Custom depths are available

Colours

Vinyl - Colour Block



Vinyl - Print/Patterned



Finishes

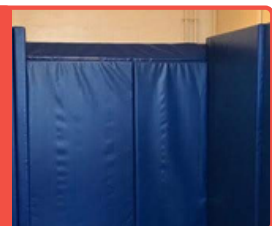
Straight



Wavy Top

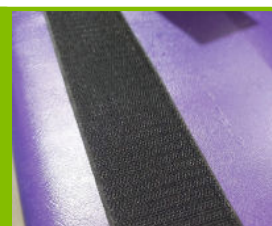


Sloped Top

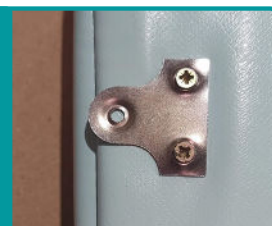


Fixings

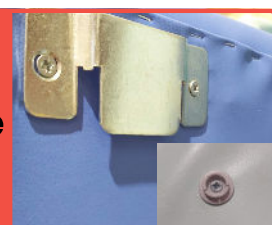
Velcro



Screw Bracket



Removable

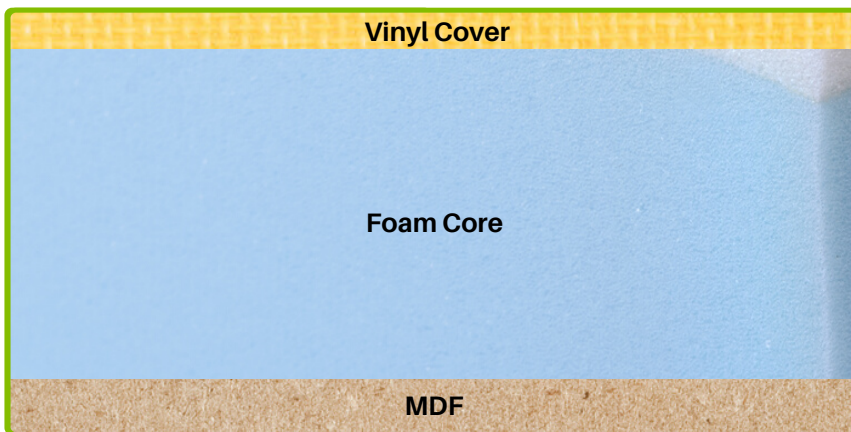


Floor Padding Specification



Padding Construction

- Our safety padding is made with a cushioning foam core, robust MDF backboard and is covered in easy to clean, machine sewn vinyl.
- Decide whether you'd like to fix the base with **non-slip backing**.
- **Removable Floor Padding** is available without MDF backing for a lighter cushion.

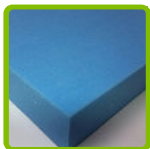


Material Specifications

Below you will find the standard specifications of the materials used in our padding. Additional properties and variations are available on request.

Foam

Polyurethane closed cell foam



75mm

- Blue colour
- Density: 33kg/m³
- Fire Test: Crib V(6)



38mm

- White colour
- Density: 50kg/m³
- Fire Test: Crib V(6)

Vinyl

- 600gsm
- Double sided PVC coated nylon
- UV inhibited
- Anti-fungal finish
- Flame resistant

MDF

- Thickness: 6mm

Optional Properties

- Moisture resistant
- Fire retardant

Floor Padding Specification



Sizes

Area

Floor padding is made to measure, and can be fit into any area

Largest panel size: 2440 x 1220mm

Depths

Standard & Recommended sizes:

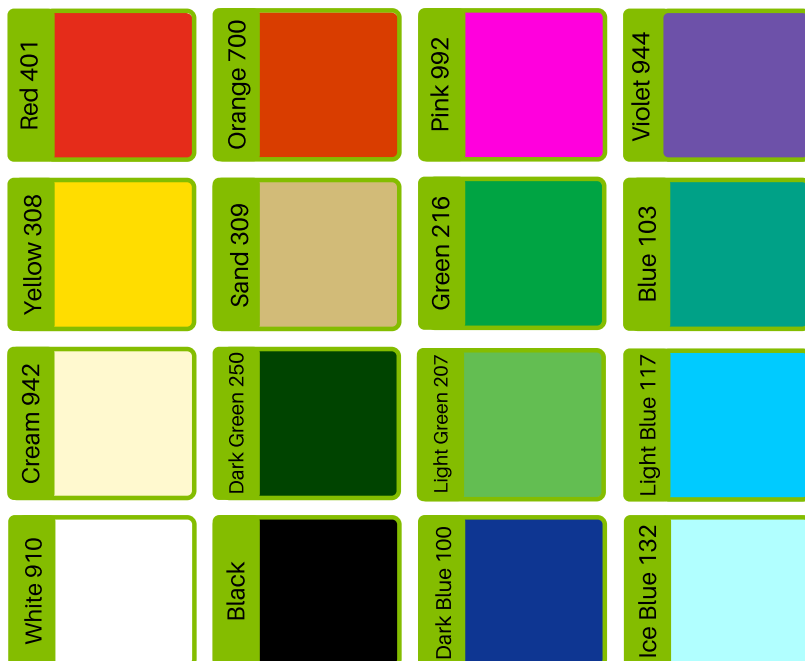
50mm

81mm

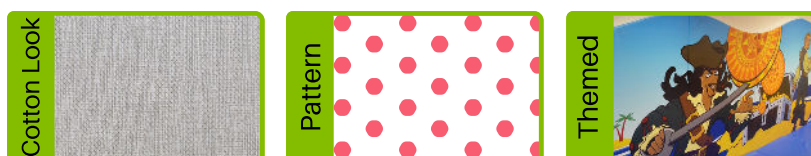
Custom depths are available

Colours

Vinyl - Colour Block



Vinyl - Print/Patterned



Fixings

Perfect Fit

Typically our floor padding is held in place by its own weight and tight fit, with no need for extra fixings.



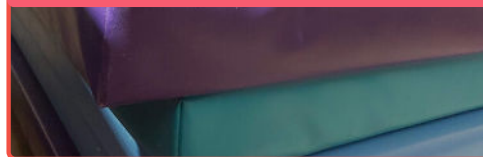
Velcro

Perfect for spaces with partial padding covering.



Removable

Constructed without MDF backing for a softer, lighter feel. Making it easy to move around and use in multiple spaces.



Finishes

Non-Slip Base

For extra safety include a non-slip base into the design of your padding.